

2002 Oyster 47

Boat Type: Racer and Cruiser

Address: Portsmouth, RI, US

Price: \$395,000



OVERVIEW

SKELLUM is a great example of the highly regarded Oyster 47 that benefited from a major refit in 2017. Built for world cruising shorthanded to Lloyd's A1 construction standards, she has a spacious 3-stateroom layout with workshop and huge lazarette. In 2017 her owner spent over \$100,000 refitting her with all new topside and deck paint, deck nonskid, Volvo saildrive, navigation computer, mainsheet traveller, hydraulic backstay adjuster, headsail furler, dodger, life raft and much more. Owner's plans have now changed and SKELLUM represents an incredible opportunity for anyone looking for a proven bluewater cruiser/racer that is absolutely ready to go.

SPECIFICATIONS

Basic Information

Manufacturer:	Oyster	Vessel Name:	SKELLUM
Model:	47	Boat Type:	Racer and Cruiser
Year:	2002	Hull Material:	Fiberglass
Category:	Sail	Hull Type:	
Condition:	Used	Hull Color:	
Location:	Portsmouth, RI, US	Designer:	Holman and Pye
Available for sale in U.S. waters:	Yes	Flag of Registry:	

Dimensions & Weight

Length:	47 ft - 14.33 meter	Draft - max:	-
LOA:	47 ft - 14.33 meter	Bridge Clearance:	-
Beam:	-	Dry Weight:	-

Engine

Make:	Volvo	Engine Type:	Inboard
Model:	MD-22 Naturally Aspirated	Drive Type:	
Engine(s):	1	Fuel Type:	Diesel
Hours:	3000	Horsepower:	59 (Individual), 59 (combined)
Cruise Speed:	-	Max Speed:	-
Range:	-	Joystick Control:	No

Tank Capacities

Fuel Tank:	168 gallons - 1 tank(s)	Holding Tank:	-
Fresh Water Tank:	120 gallons - 1 tank(s)		

Accommodations

Total Cabins:	3	Crew Cabins:	1
Total Berths:	2	Crew Berths:	1
Total Sleeps:	1	Crew Sleeps:	1
Total Heads:	2	Crew Heads:	1
Captains Cabin:	-		

DESCRIPTIONS

ACCOMMODATIONS

Very spacious 3 stateroom layout. High-quality finish in teak, with Oyster "Millenium" styling. Checkerboard-style teak cabin sole with inset black border. Deck salon design keeps interior bright and incorporates excellent

ventilation.

Starting forward, there is a wide V-berth with filler piece and cushion, under-berth stowage and a hanging locker. Fiddled shelves port and starboard above berths.

Just aft, to port, is a second guest cabin with bunk berths, plenty of storage and a hanging locker. Opposite this cabin is a head and shower.

Further aft and up a step is the main salon. To port is an L-shaped settee with fold-over teak table. To starboard is a second settee. There are lee cloths and a well-hidden foot well for the starboard settee, making it long enough to sleep on. There is abundant storage throughout this area, as the tanks are situated below the cabin sole. There is bottle storage and a drawer incorporated into the table pedestal. Aft and to starboard is the navigation area, with a forward-facing seat and large nav table befitting an offshore cruising yacht. There is stowage for half-folded Admiralty charts.

Just aft is a utility room/workshop/stowage locker. This doubles as a sail locker (access from both the salon and cockpit) and provides great engine access. The washing machine is housed here. The space also functions as a wet locker.

Aft, to port, is the walk-through galley and then the master stateroom. There is an island-type queen sized berth, slightly offset to starboard. There are ample drawers and lockers and an en-suite head and shower.

- Alcantara "Amber Glow" upholstery
- OceanAir shades and screens for hatches
- Curtains for deck salon windows
- Custom Tempurpedic mattress for master stateroom
- Webasto cabin heater
- Webasto AC for aft cabin
- Safe with key lock in owner's stateroom

Galley

Excellent galley arrangement in the walk-through to the aft cabin. Countertop wraps around and under the companionway. There is excellent ventilation and light. This galley is well-designed for both liveaboard and passagemaking, as it is quite functional as a sea galley.

- Twin stainless steel sinks on the inboard side, near centerline
- Hans Grohe tap with pull-out spout
- Hot water heater, approximately 12 gallons (2014)
- Pressure hot and cold water
- Manual hand pump for fresh water
- Gimbale Force 10 stainless steel 4-burner propane stove, with grill and oven
- Frigomatic upright 12v refrigerator with stainless steel door, keel cooled
- Village Marine 350 12v watermaker 190 g/p/d
- Baby Nova 1000 clothes washer in utility cabin, does incredible job washing 4.5 kilos/10 pounds of laundry
- Oyster customized Wedgwood china crockery
- Oyster customized Sheffield stainless steel cutlery

NAVIGATION EQUIPMENT and ELECTRONICS

- Navigation station located to starboard, just as you come down the companionway steps
- Navigation computer with Expedition charting program (2017)
- Samsung 21.5 LED HD display and Logitech wireless mouse and keyboard (2017)
- NMEA 2000 installed on computer for connection to navigational electronics (2017)
- Standard Horizon GX 2100 Matrix VHF with AIS
- Autohelm ST7000 with ST6000+ control on pedestal. Spare (new) linear drive is aboard
- Raymarine ST60 at helm (2012)
- Raymarine ST60 wind and multifunction at nav station (2012)

- Raymarine Depth, Knotlog and Wind Instrument above companionway (2012)
- Raymarine C-Series Hybrid Touch GPS and chart plotter, with digital radar with AIS transponder and receiver. 4kW digital 24" radome with a range of 48nm (2012)
- AIS can be switched to "run silent"
- Navionics Gold charts for East Coast and Caribbean
- WiFi video streaming and waypoint synchronization with iPhone and iPad mobile devices
- Blue connectivity for optional RCU-3 remote control and multimedia control
- Autopilot upgrade to gyro compass with MARPA function on radar
- ICS Nav 4 Navtex Plus
- Icom 802 SSB radio with receiver for email and GRIB files
- Icom SSB has been "opened" to Ham radio frequencies
- Custom copper grounding plane imbedded into the hull, allowing superior SSB and Ham functionality
- Firdell blipper radar reflector
- Pioneer stereo with cockpit speakers (2015)

HULL and DECK

- Hull faired and Awlgrippped "Midnight Blue", with double white boot stripe and cove stripe (2017)
- Deck/Cabin house non-skid re-painted "Moondust" (2017)
- Teak decks in excellent condition (re-caulked in 2017)

Anchoring

- Lewmar V6 12v windlass with deck-mounted "up and down" foot switches (2013)
- Double anchor roller
- 65 lb. CQR with 300' of new 3/8" G4 hi-tensile chain
- 45 lb. CQR anchor with 200 feet of chain
- Large Danforth anchor

Other Deck Details

- Sunbrella "Toast" dodger (2017)
- Bimini top with sun-blocking zip-in shades for all sides
- Cockpit cushions
- Varnished teak cockpit table with leaves
- D-rings in the cockpit for harnesses
- Webbing jackstays and shackles on deck
- Manual bilge pump in cockpit sole
- Hot and cold shower at transom
- Pushpit seats
- Ocean Safety canister life raft in stern cradle (2017)
- Swim ladder on platform
- Avon 9' Inflatable dinghy with air floor
- 6hp Yamaha outboard with wet exhaust
- (6) Lewmar deck hatches
- (7) Lewmar opening ports
- (3) Gebo opening ports
- (7) Custom alloy-framed black powdercoated deck saloon windows in toughened smoked 8mm glass
- (2) Forward deck salon windows open, center window is fixed
- Fairclough winter cover

ELECTRICAL EQUIPMENT

- 12v/220v systems. Virtually all 110v equipment works perfectly and yacht accepts 110v or 220v shore power
- 3kW Mastervolt Whisper 3000 generator
- All batteries are 6v, with an additional 230 ah added to the original specifications

- Crossover link between start bank and domestic bank
- 110 amp Mastervolt battery charger - charges battery bank very quickly off genset or shore power
- 30 amp dockside electrical power
- Isolation transformer

MECHANICAL

- Volvo MD-22 Diesel engine with Saildrive
- Major service and upgrades including new Saildrive unit in 2017:
 1. Valves, injectors, heat exchanger set and serviced
 2. New Volvo 130-S Saildrive
 3. New gaskets, new boot
- Whitlock cable wheel steering. New steering cables (2015)
- 910mm diameter destroyer-type stainless steel wheel and friction brake
- Leather covered steering wheel folds when not in use
- Single lever engine control
- Engine oil has been changed every 100 - 110 hours since new
- Racor filters in parallel with indicator light when fouled
- 17" 3-bladed Max prop
- Sleipner 12v tunnel-type bow thruster
- All thru-hulls replaced 2012
- Stainless steel gravity holding tank for forward head, approximately 30 gallons
- Jabsco heads
- Excellent spare parts inventory, including spare prop and spare starter
- Two Shurflow water pressure pumps, in parallel
- Pressure accumulator tank
- Jabsco Maxi Puppy 3000 electric bilge pump
- Whale Gusher 10 MKIII manual bilge pump
- Fire extinguishers, plus automatic fire extinguisher in engine room

SAILS AND RIGGING

SKELLUM is rigged with a Selden aluminum anodized mast and boom (never needs painting!), stepped to the keel. Selden in-mast furling and Harken roller furling for the headsail. Routine sail handling and reefing can be done from the safety of the cockpit.

Sail inventory

- North mainsail (2015) with vertical battens, made of Norlam fabric
- 120% Hood yankee (2009)
- 150% genoa
- Storm jib in safety orange
- North Sails gennaker

Rigging

- Mast height is 62.5 feet above water, including antenna, making her rig ICW friendly
- Selden in-mast mainsail furling
- Harken integral hydraulic backstay adjuster (2017)
- Harken "big boat" 3-part purchase mainsheet traveler system (2017)
- Harken headsail furler (2017)
- Solid rod boom vang
- Carbon fiber spinnaker pole, stows vertically on mast. (Great upgrade from standard and the reduction in weight makes it much easier to deploy)

- Halyard for passerelle (Spectra)
- Removable inner forestay (for storm jib)

Winches

- Electric Lewmar 44 CEST winch for genoa furling line, portside, allowing easy furling in strong winds
- (2) Lewmar 58 CST primary winches
- (2) Lewmar 44 CST winches over companionway
- (1) Lewmar 30 CST winch on mast for main halyard
- (1) Lewmar 16C reef line winch on mast
- Tricolor with anchor light at masthead

CONSTRUCTION and DESIGN DETAILS

- Solid fiberglass hull is hand-laminated and is built using Lloyd's approved specifications. Forward anchor locker bulkhead is watertight
- Decks are fiberglass with a balsa core, also to Lloyd's specifications
- Keel is a high performance lead bulb keel. Rudder is fully skegged
- Water and fuel tankage are integral fiberglass, removing virtually any possibility of leaky tanks

EXCLUSIONS

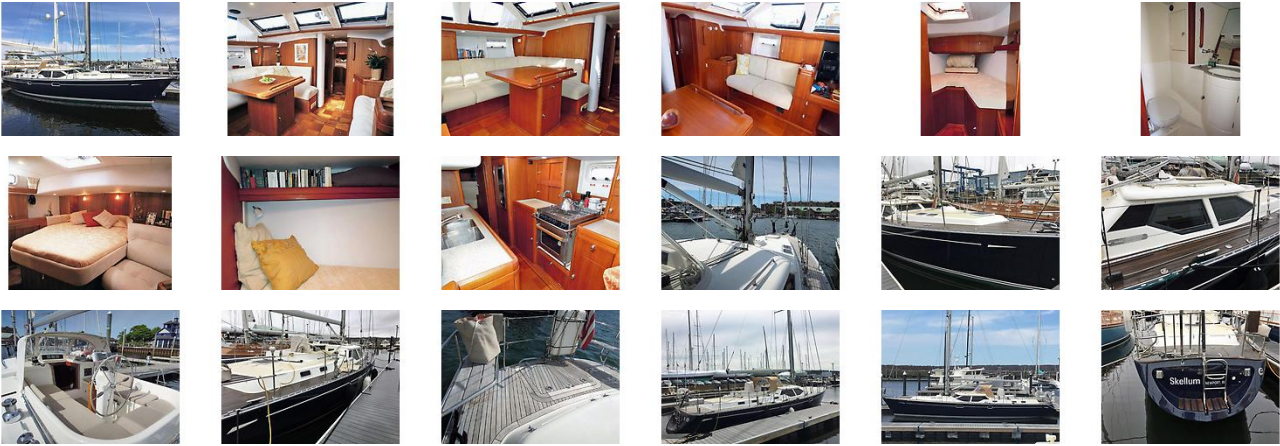
The owner's personal effects are excluded from the sale.

DISCLAIMER

The Company offers the details of this vessel in good faith but cannot guarantee or warrant the accuracy of this information nor warrant the condition of the vessel. A buyer should instruct his agents, or his surveyors, to investigate such details as the buyer desires validated. This vessel is offered subject to prior sale, price change, or withdrawal without notice.

Essex Boat Works is pleased to assist you in the purchase of this vessel. This boat is centrally listed by Wellington Yacht Partners.

GALLERY



LOCATION MAP



MASTER ADMIN
Essex Boat Works, LLC
9 Ferry Street
Essex, CT, US
Office: 860 767-8276
Mobile: 860 767-8276
office@essexboatworks.com