

2001 Grand Banks 43 Eastbay EX

Boat Type: Cruiser

Address: Greenwich, CT, US

Price: \$319,000



OVERVIEW

Motivated seller moving on to a larger boat. Bring all offers!

PRICED TO SELL!!

This Grand Banks 43 Eastbay Hardtop Express was yet another addition to the popular Eastbay series of classic Downeast cruisers first introduced by Grand Banks in 1994.

Some of her many features include:

- Generator completely rebuilt
- Professionally maintained
- All bright work recently done
- Recent complete detail.

- RARE SINGLE MASTER STATEROOM WITH CENTER LINE QUEEN!!

SPECIFICATIONS

Basic Information

Manufacturer:	Grand Banks	Vessel Name:	WATERMARK
Model:	43 Eastbay EX	Boat Type:	Cruiser
Year:	2001	Hull Material:	Fiberglass
Category:	Power	Hull Type:	
Condition:	Used	Hull Color:	
Location:	Greenwich, CT, US	Designer:	
Available for sale in U.S. waters:	Yes	Flag of Registry:	

Dimensions & Weight

Length:	43 ft - 13.11 meter	Draft - max:	3 ft 7 in - 1.09 meter
LOA:	43 ft - 13.11 meter	Bridge Clearance:	-
Beam:	13 ft 2 in - 4.01 meter	Dry Weight:	29760 ft - 9070.85 meter

Engine

Make:	Yanmar	Engine Type:	Inboard
Model:	6CXM-ETE	Drive Type:	
Engine(s):	2	Fuel Type:	Diesel
Hours:	1350	Horsepower:	-
Cruise Speed:	28 MPH	Max Speed:	32 MPH
Range:	-	Joystick Control:	No

Tank Capacities

Fuel Tank:	450 gallons - 1 tank(s)	Holding Tank:	-
Fresh Water Tank:	110 gallons - 1 tank(s)		

Accommodations

Total Cabins:	1	Crew Cabins:	1
Total Berths:	-	Crew Berths:	1
Total Sleeps:	1	Crew Sleeps:	1
Total Heads:	1	Crew Heads:	1
Captains Cabin:	-		

DESCRIPTIONS

Accomodations

WATERMARK has a single stateroom layout which allows for a larger forward stateroom with a centerline queen

berth with a custom pillow top mattress. This extra large stateroom has hanging locker and drawer storage. The large split head has a large shower with storage lockers to port, a Vacuflush toilet, vanity, plus more storage to starboard.

The salon has an extended and larger than standard U-shaped settee, finished in custom Ultrasuede fabrics, and a custom teak table to starboard. The good sized U-shaped galley is to port.

The flawless Grand Banks teak joinerwork is finished in satin varnish, with high gloss varnish on the teak trim and on the teak and holly cabin sole. There are three overhead opening hatches below, and six opening stainless steel ports with screens and curtains, and fresh air is augmented by air conditioning.

Galley

The U-shaped galley is to port in the salon, with a Princess three burner electric cooktop with microwave/convection oven under it facing outboard. The under counter refrigerator with small freezer compartment is by Coolmatic, and a separate freezer is under the port settee in the helm area.

Countertops and sink covers are Corian, and the double sinks are stainless. Storage is ample in lockers above and below the counters, and there is an opening port over the stove.

Helm and Cockpit

The large helm area has a double seat to starboard, with storage under, and visibility for the helmsman is excellent. To port is a custom teak table and a full length L-shaped settee, with a freezer under. More storage is aft of the helm station. There are opening hatches and opening side windows in the helm area, and the center window in the windscreen is also opening, plus this area is air conditioned. There is also an aft enclosure with zip door for the helm area, allowing comfort in all weather,

Down two steps and aft is the large cockpit area with teak decks. A built in bench seat is forward to port, and there is ample space for additional chairs and a table in the cockpit, plus there is also a cockpit awning. The lazarette provides more storage, and a transom door opens to the teak swim platform.

Manufacturer Provided Description

"Top up or top down" design paired with a long stretch of usable space is what the Grand Banks 43 Eastbay EX delivers. A fast, sophisticated cruiser ideal for onboard entertaining. Typically, the 43 Eastbay EX cruises at 24 knots with top speeds reaching 28 knots.

As for fuel consumption, the yacht's 450-gallon capacity means a cruising range in excess of 400 nautical miles. Onboard, burnished beauty and practicality rule the day. With its joinery of hand-rubbed teak, generously sized salon, well-appointed galley and easy-to-access head and shower, the 43 Eastbay EX definitely fits into the luxury category.

Thanks to its rugged construction and dependable engineering, this boat can be counted on to go the distance.

Disclaimer

The Company offers the details of this vessel in good faith but cannot guarantee or warrant the accuracy of this information nor warrant the condition of the vessel. A buyer should instruct his agents, or his surveyors, to investigate such details as the buyer desires validated. Hours listed may vary from actual hours due to recent use. Purchaser is encouraged to verify hours prior to purchase. This vessel is offered subject to prior sale, price change,

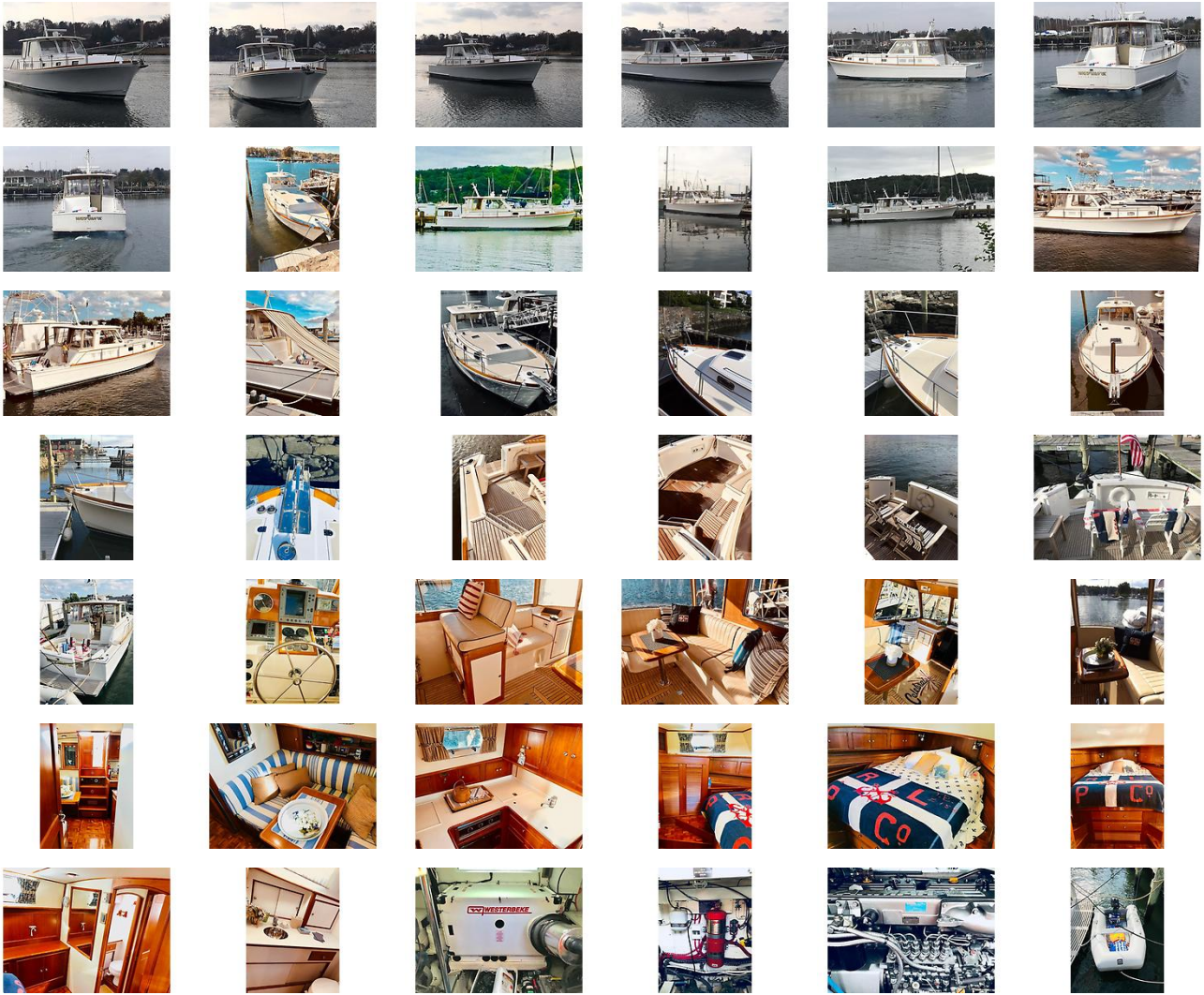
or withdrawal without notice.

Basic Co Brokerage Power is pleased to assist you in the purchase of this vessel. This boat is centrally listed by Denison Yachting - Palm Beach.

External Links

- [Manufacturer Website](#)Manufacturer Website

GALLERY



LOCATION MAP





MASTER ADMIN
Essex Boat Works, LLC
9 Ferry Street
Essex, CT, US
Office: 860 767-8276
Mobile: 860 767-8276
office@essexboatworks.com