

2008 Krogen Express 52

Boat Type: Trawler

Address: Key West, FL, US

Price: \$1,165,000



OVERVIEW

Designed by James Krogen, the Krogen Express 52 combines classic, timeless style with exceptional seakeeping and efficiency. Her plumb stem, raised bow, and broad beam forward allow her to slice through the waves with ease while providing a great deal of living space in her accommodations. Her low profile allows her to get under bridges as low as 16' and with a draft of just 4', she'll take you almost anywhere. Her semi-displacement hull delivers trawler efficiency at displacement speeds with true cruise capabilities in the mid-to-upper teens. And her generous keel provides stability and protection for her twin propellers.

BLUE MOON is a beautiful one owner, low hour Krogen Express 52 with a San Mateo Wheat hull and Aristo Blue boot stripe. She has been continuously maintained and upgraded by her owner. During the summer of 2018 she enjoyed new bottom paint, a complete stabilizer service, props balanced, Blue/White LED underwater lights, an upgrade to her satellite TV system, and new canvas covers.

Blue Moon will be in North Palm Beach leading up to and during the

Palm Beach International Boat Show March 26 - April 1, 2019

SPECIFICATIONS

Basic Information

Manufacturer:	Krogen Express	Vessel Name:	BLUE MOON
Model:	52	Boat Type:	Trawler
Year:	2008	Hull Material:	Fiberglass
Category:	Power	Hull Type:	
Condition:	Used	Hull Color:	
Location:	Key West, FL, US	Designer:	James Krogen
Available for sale in U.S. waters:	Yes	Flag of Registry:	

Dimensions & Weight

Length:	52 ft - 15.85 meter	Draft - max:	-
LOA:	57 ft 6 in - 17.53 meter	Bridge Clearance:	-
Beam:	15 ft 11 in - 4.85 meter	Dry Weight:	-

Engine

Make:	Yanmar	Engine Type:	Inboard
Model:	6LY3-ETP	Drive Type:	
Engine(s):	2	Fuel Type:	Diesel
Hours:	1792	Horsepower:	480 (Individual), 960 (combined)
Cruise Speed:	18 MPH	Max Speed:	24 MPH
Range:	-	Joystick Control:	No

Tank Capacities

Fuel Tank:	350 gallons - 2 tank(s)	Holding Tank:	90 gallons - 1 tank(s)
Fresh Water Tank:	185 gallons - 2 tank(s)		

Accommodations

Total Cabins:	2	Crew Cabins:	1
Total Berths:	3	Crew Berths:	1
Total Sleeps:	1	Crew Sleeps:	1
Total Heads:	2	Crew Heads:	1
Captains Cabin:	-		

DESCRIPTIONS

Accommodations and Features

Aft Deck

BLUE MOON can be accessed from the aft deck, with a large transom door and wide boarding gates on both sides of the spacious, covered cockpit. Boarding with luggage or provisions is safe and convenient.

- Cockpit table and directors chairs (4)
- Scandvik cockpit hot/cold shower
- Teak decking
- Swim Step w/non-skid
- Swim ladder
- Access to lazarette
- Emergency tiller access port
- Port/Starboard/Stern boarding gates
- Shore power, electrical, CATV, fresh water outlets
- Fresh water washdown quick-release port
- Raymarine Voyager aft facing camera

The lazarette below the aft deck provides for ample storage for lines, fenders, cleaning supplies, dive gear and water toys.

Lazarette

- Rule bilge pump and float
- Hynautic steering reservoir
- Steering ram
- Storage shelves/compartments

Foredeck

- Anchor locker w/ ladder
- Freeman watertight hatch
- Maxwell windlass w/ on deck foot pedals
- Plow Anchor
- 50' / 200' chain/rode
- Shore power outlet (port side walkway)
- CATV/Tel outlet (port side walkway)
- Deck fills - waste, water, fuel (walkway)
- Fresh water washdown

Salon

Entering the saloon through double, watertight aluminum doors you will find an inviting cherry wood interior. Along with her sumptuous joinery, old world craftsmanship is obvious with the quality of her appointments and overall fit and finish. Legendary Krogen livability is evidenced by the large opening windows and generous headroom. Inviting reclining chairs to port and an L-settee to starboard are situated for comfortably viewing the built-in 26" LCD TV and enjoying the Bose home theater system. To port is generous additional under deck storage and a built-in bookcase featuring fiddled shelves and lockers.

Located to starboard, is a comfortable L-shaped settee with storage beneath and an end table forward. The settee is covered in ultra-suede. The hi-lo table has leaves that fold out for expanded seating capacity and can be moved outside for dining under the stars. Silhouette blinds provide privacy and protection from the sun.

- Double water tight aluminum doors
- Port side bookcase and storage
- U-line ice maker
- Port/Stbd opening windows
- Ekornes chairs and ottomans (2)
- L- Settee in Ultrasuede
- Samsung LCD TV
- Bose surround sound home theater system
- Fusion speaker (2)

- Hi/Lo cherry table
- Teak end table
- Reading lamps (2)
- Pleated blinds
- CruiseAir zone control (SMXir)

Galley

The gourmet galley-up is equipped for meal preparation with a 3-burner, Force 10 propane range, GE refrigerator/freezer, GE microwave, and deep Elkay sink with pullout sprayer faucet. The Corian counter tops are easy to maintain and the raised section is ideal for serving guests. Traditional, stylish round port lights provides ventilation while abundant storage ensures a good home can be found for all provisions. Beneath the starboard side bookcase, the U-line ice maker frees up space in the freezer.

- 3-burner, Force 10 propane range
- GE refrigerator (14 cu ft)
- GE SS microwave
- Elkay sink with pullout sprayer faucet
- Corian countertops
- Trident propane control
- Manship round port light (2)
- Portable fire extinguisher
- Fireboy carbon monoxide detector
- MasterVolt inverter remote panel
- Floor hatch for engine room access
- CruiseAir zone control (SMXir)

Master Stateroom

A queen island berth is the centerpiece of the master stateroom. With over 7'3" of headroom and light provided by four (4) opening portlights and a large screened deck hatch overhead, this master stateroom feels surprisingly generous. Full hanging lockers are found to both port and starboard, six (6) deep drawers under the berth, and a dresser with drawers and shelved storage ensure owners have all the room they need for cruising and living aboard. A look beneath the berth reveals a large storage area and provides access to the dedicated battery bank for the bow thruster and windlass.

- 7'3"+ of headroom
- Manship port lights (4)
- Lewmar deck hatch
- Centerline queen mattress (does not require custom linens)
- Hanging lockers (2)
- Deep drawers under the berth (6)
- Dresser with drawers (8) and shelved storage
- CATV outlet and Toshiba 19" TV
- Clarion entertainment system w/ Clarion speakers (2)
- Power lift raises the berth for access to storage beneath
- Reading lights (2)
- Dedicated battery bank for the windlass and bow thruster
- CruiseAir zone control (SMXir)
- Portable fire extinguisher

Master Head (ensuite)

The ensuite head features a molded fiberglass shower stall with a seat, Vacuflush head, and Corian countertops.

- Molded fiberglass shower stall w/ seat
- Vacuflush head
- Corian countertop
- FM Mattson fixtures

- Towel racks (3)
- Mirror
- Air conditioning supply
- Storage under sink
- Manship port light (1)

Guest Stateroom/Office

An L-settee that converts to a double berth highlights the flexible nature of the guest stateroom, while the pullman berth provides additional sleeping capacity. Located inboard is a large desk with drawers. A deep hanging locker and deep drawers under the settee provide ample storage. Two port lights and a screened hatch overhead make this space airy and comfortable.

- An L-settee that converts to a double berth
- Pullman berth
- Large desk with drawers
- Full length hanging locker w/ shelf, 110v electrical and CATV outlet
- Large drawers (2) under the settee
- Manship port lights (2)
- Lewmar overhead hatch w/screen
- Reading lights (3)
- Access to pump room (under sole)
- Safe-T-Alert carbon monoxide detector (in companionway)
- Portable fire extinguisher (in companionway)

Guest/Day Head

- Molded fiberglass shower stall w/ seat
- Vacuflush head
- Corian countertop
- FM Mattson fixtures
- Towel racks (3)
- Mirror
- Air conditioning supply
- Storage under sink
- Manship port light (1)

Wheelhouse

The centerline helm console in the raised wheelhouse is equipped with a full complement of navigational electronics, all within easy reach of the Ultraleather Stidd helm chair. Precise Teleflex Morse controls allow smooth control of the twin 480hp Yanmars while her rudders are guided by a custom, handcrafted cherry helm wheel. Garmin electronics occupy the helm. A Garmin color radar chartplotter is integrated with the Garmin AP21 autopilot. Two dedicated depth displays offer redundancy while a Uniden UM625C VHF radio ensures good communication when required. Two large chart drawers and a wide, lighted chart table to starboard allow for easy storage and use of paper charts. Sidepower bow and stern thrusters help with close quarters handling. Controls for the dual trumpet Kahlenberg horns, intermittent Exalto wiper/washer system, Maxwell windlass, and Lenco electric trim tabs are all close at hand.

- Centerline helm console
- Ultraleather stidd helm chair (Almond)
- Teleflex Morse controls
- Custom handcrafted cherry helm wheel
- Garmin 5212 radar-chartplotter (2)
- Garmin auto pilot w/ wireless remote control
- Garmin GPSMap 492
- Yanmar i560e engine interface (2)
- Uniden UM625C VHF radio
- Yacht Controller remote
- ACR Search Light control

- Large chart drawers (2)
- Lighted chart table
- Overhead lighting
- CruiseAir AC zone control (SMXir)
- Sidepower bow and stern thruster controls w/ remote
- Kahlenberg dual trumpet horn whistle control (M-511A)
- Exalto intermittent wiper/washer system
- Maxwell windlass control
- Lenco trim tab controls
- Fusion Stereo w/I-Pod dock/Bluetooth sound system (MS-IP700i)
- JVC speakers (2)
- Diamond Sea Glaze weather tight dutch doors (2)
- Diamond Sea Glaze pilothouse windows
- Stair access to flybridge
- Manship hatch w/screen
- Textilene sun screens for pilothouse windows (Black)
- Vcool window film for UV and heat reduction

Pilot Berth / Settee

The wheelhouse settee/pilot berth is elevated for optimal forward visibility, long enough for naps underway, and converts to a 3/4 double berth to accommodate overnight guests. A table provides a convenient work surface and the wall mounted lamps to port and starboard make this an ideal location to retire with a good book. Above the settee, a color coordinated half hull model showcases her elegant lines and makes for interesting conversation. Beneath the settee are several small lockers for equipment storage. Weather tight dutch doors lead directly to the wide side decks while stairs to the port side of the settee provide safe access to the flybridge. Textilene screens for all pilothouse windows provide sun protection.

- Elevated convertible 3/4 double pilot berth (custom upholstery)
- Hi/Lo table
- Reading light
- Color coordinated Krogen Express half hull model
- Small lockers for equipment storage (5)
- Small Drawer
- 110v Outlet
- ACR EPIRB

Flybridge

While her pilothouse is fully capable, most Krogen Express owners prefer operating their vessels on the flybridge where they can better experience the sights and sounds while underway. Conversations are easy as very little engine noise makes its way to the flybridge, leaving only the soothing sounds of sea breezes and ocean waves with which to compete. A frameless venturi windscreen deflects air above the captain sitting in the comfortable, raised centerline Stidd helm chair. A Garmin suite of electronics provides navigational support along with the large Danforth compass. Controls for the bow and stern thrusters, trim tabs, horn and windlass are close at hand. The 4" HD radar scanner and satellite TV antenna are mounted on an aluminum spar-style mast that can be lowered when necessary. Shaded by a Sunbrella™ bimini top, the L-settee Sunbrella™ cushions provide for comfortable seating for crew and guests and contains storage beneath.

- Sunbrella™ bimini and canvas package (helm, tender, helm chair, grill, mooring)
- Centerline stidd helm chair
- AIS System integrated with chartplotters
- Garmin autopilot control head
- Garmin GPSMap 440
- Ritchie compass
- Icom IC-M506 VHF
- Yanmar i560e engine interface (2)
- Sidepower bow and stern thrusters controls

- Lenco trim tab controls
- Maxwell Liberty windlass control
- ABT Trac® remote panel
- ACR Search Light control
- Fusion bluetooth stereo with I-Pod dock (MS-NRX200i)
- MB-Quart speakers (2)
- Teak decking at flybridge
- L-settee cushions with Sunbrella™ navy with white piping
- Yanmar Engine Stop/Start (2)

Boat Deck

Just aft of the flybridge settee the open boat deck easily accommodates two folding deck chairs and serves as access to the 11' Nautica center console tender. The dinghy, with a raised console and seating for 4, is powered by a 40 hp 4-stroke Yamaha outboard and launched with the Steelhead 1000 lb davit.

- Garmin 4" HD color radar (open array)
- Blue/White LED Spreader lights (2018)
- KVH 5 Sat TV (2018)
- Non-skid boat deck
- Magma Infrared propane grill
- Custom aluminum spar-style mast
- Glomex off-air TV antenna
- 11' Nautica tender w/ 40 hp 4-stroke Yamaha outboard
- Steelhead SMR1000R hydraulic davit (1000lbs)
- Lifesling 2 Overboard rescue system
- 110v Outlet

Engine Room

The Krogen Express boasts a stand up engine room which houses a pair of 480 hp electronic Yanmar diesel engines that can be easily accessed from every side. The engines are fired by dedicated starting batteries and drive through matched Kanzaki transmissions. Vibration is kept to a minimum with Aqua Drive systems. The 12kw Northern Lights generator is located centerline and has its own starting battery. A Reverso fluid changing system is connected to each engine and transmission, and the generator to improve serviceability. As with the water tanks, diesel fuel levels can be easily assessed with convenient sight tubes. An automatic fire suppression system, freshwater washdown, and storage for tools and supplies above and alongside the water tanks are additional features welcomed by her owners.

- Stand up engine room
- Raymarine Voyager camera
- 480 hp 6LY3-ETP Yanmar diesel engines - 1792/1808 hours (2)
- 8D AGM engine start batteries (1 port, 1 starboard)
- Kanzaki transmissions (2)
- Aqua Drive (2)
- 12 kw Northern Lights generator (545 hours)
- 4D AGM generator start battery
- MasterVolt 12/50-3 charger (500ah)
- Reverso fluid changing system
- Grohe fuel transfer pump
- Aluminum fuel tanks (2) with site gauges
- SS fresh water tanks (2) with site gauges
- Seafire FE-241 automatic fire suppression system
- Freshwater spigot
- Portable fire extinguisher
- Storage for tools and supplies above p/s fresh water tanks

Pump Room (Located beneath the guest cabin sole)

Located in a separate spacious bilge area, are three CruiseAir reverse-cycle air conditioners. In the same compartment are the shower sump filters, and a 20 gallon Torrid water heater which is supplemented with heat from the main engines.

- CruiseAir reverse-cycle air conditioning compressor
- Rule bilge pump and float
- Torrid 20 gallon stainless steel water heater w/heat exchanger

Battery Room (located beneath the salon sole)

Below the sole of the salon you will find a MasterVolt 4000w inverter/charger, 1200 Ah house battery bank, and Cablemaster drum storage, all of which are easily accessed.

- 4000 watt Mastervolt inverter/charger
- Mastervolt automatic battery charger
- Pro Series PS2 battery charger
- 8D AGM house battery bank (3)
- Rule bilge pump and float
- 75' Cablemaster shorepower cord and drum

Upgrades

- Magma BBQ w/ spare propane tank
- Aft deck table and chairs
- Chart Kits and Cruising Guides
- Winslow 6-Person Life Raft (Expired)
- Sun Screens (White)
- ACR Remote Control Search Light
- Upgraded Bomar 120amp alternators
- Upgraded master cabin AC unit 16000 BTU (2018)
- Blue/White LED underwater lights (2018)
- Blue/White LED spreader lights (2018)

Recent Service

- Lifeline batteries (2017)
- Replaced cutlass bearings (2018)
- Bottom paint (2018)
- Replaced stern cockpit canvas (2018)
- Stabilizer bearings and seal service (2018)
- Props balanced (2018)
- New KVH 5 Sat TV antenna (2018)
- New running gear zincs (2018)
- New venturi windscreen on Flybridge (2018)

Exclusions

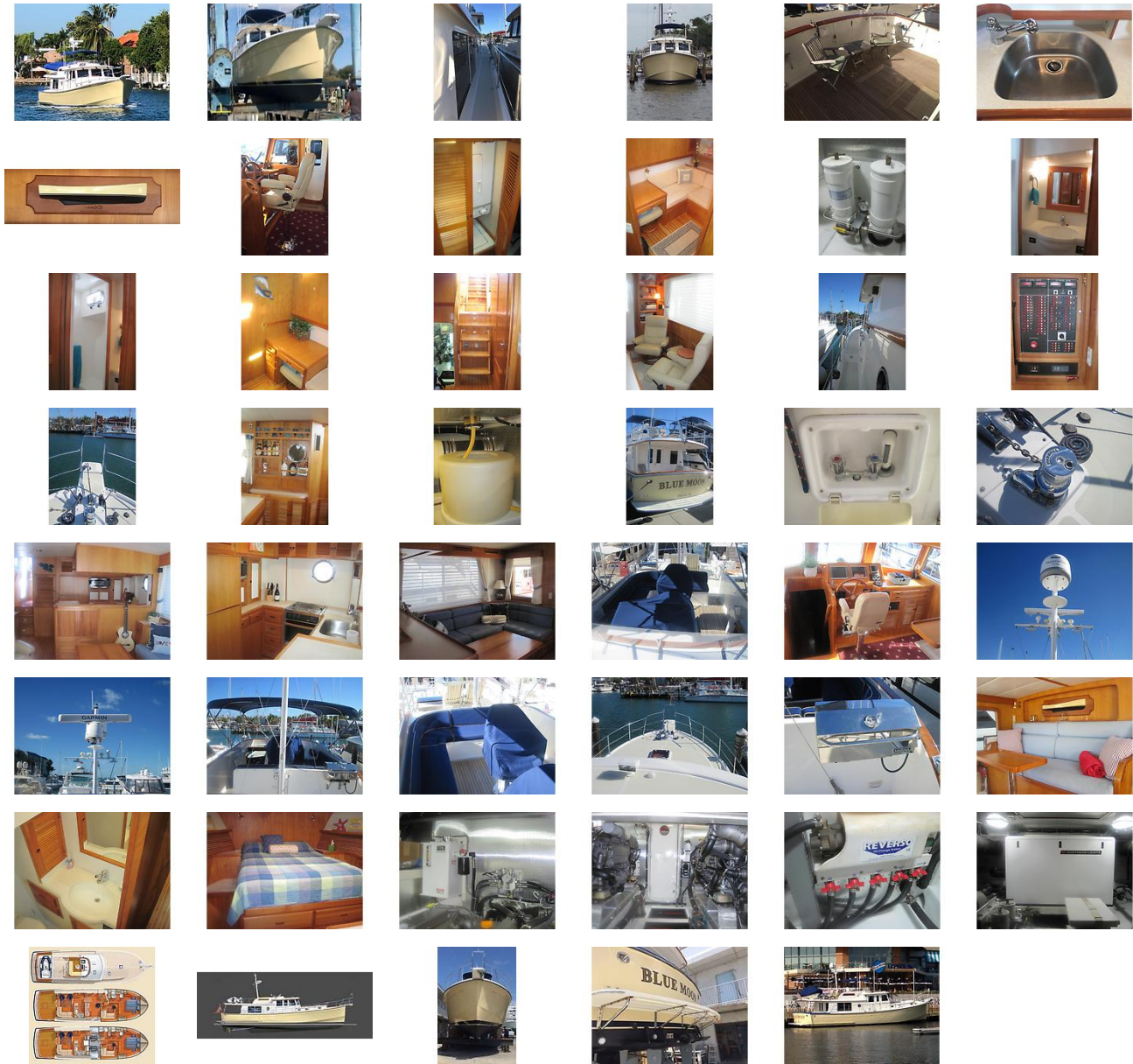
Owner's personal effects, tools, loose galley and other items, artwork and all items seen aboard or in photos but not specifically stated on this listing sheet shall be considered to be excluded from the sale.

Disclaimer

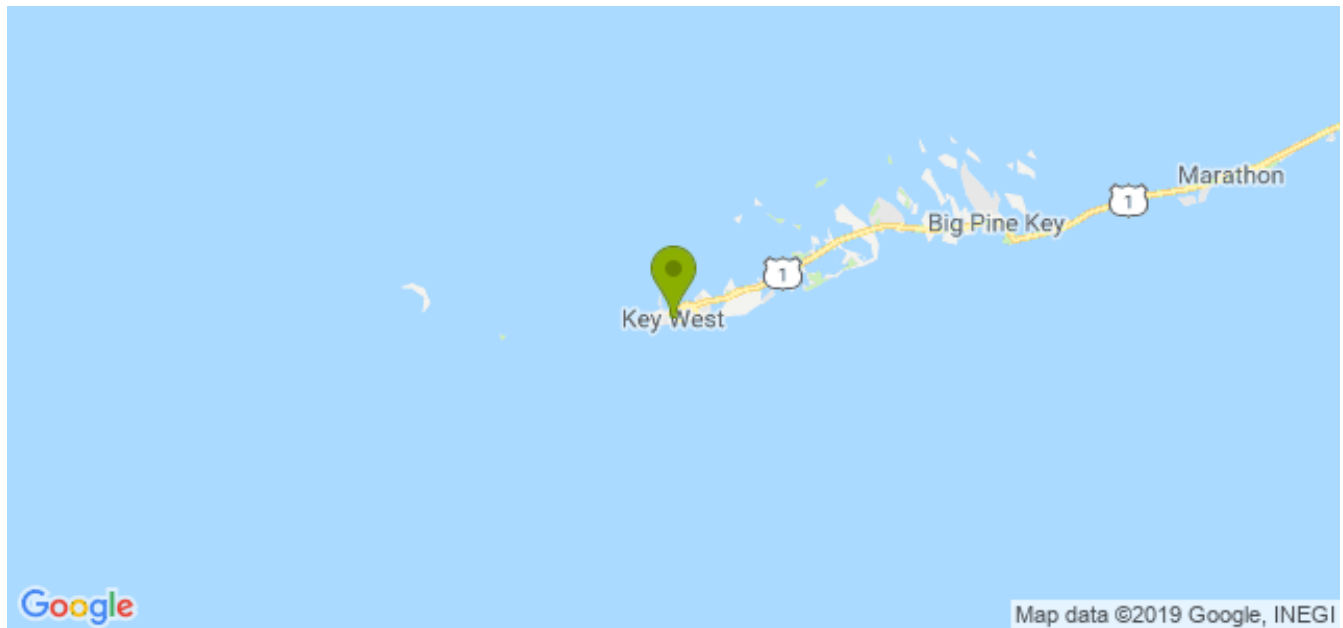
The Company offers the details of this vessel in good faith but cannot guarantee or warrant the accuracy of this information nor warrant the condition of the vessel. A buyer should instruct his agents, or his surveyors, to investigate such details as the buyer desires validated. Engine and generator hours are as of the date of the original listing and may be a representation by the owner and/or actual reading of the hour meters. The Company cannot guarantee the hours on original machinery or as represented since re-power. It is the responsibility of the purchaser

and/or his agent to verify engine hours. This vessel is offered subject to prior sale, price change, or withdrawal without notice.

GALLERY



LOCATION MAP





MASTER ADMIN
Essex Boat Works, LLC
9 Ferry Street
Essex, CT, US
Office: 860 767-8276
Mobile: 860 767-8276
office@essexboatworks.com